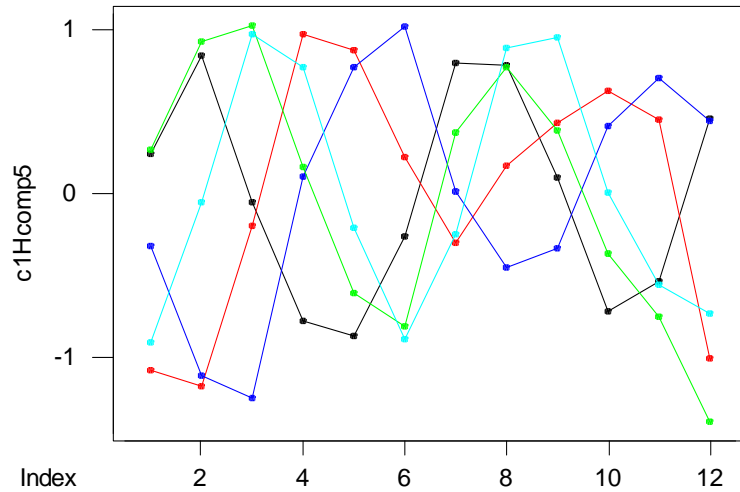
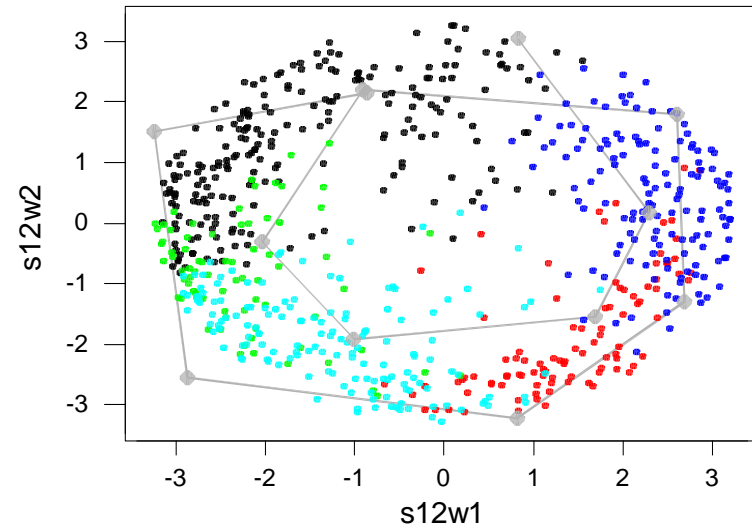


Cluster centroids, Hcomp5
 black=1 red=2 blue=3 green=4 cyan=5



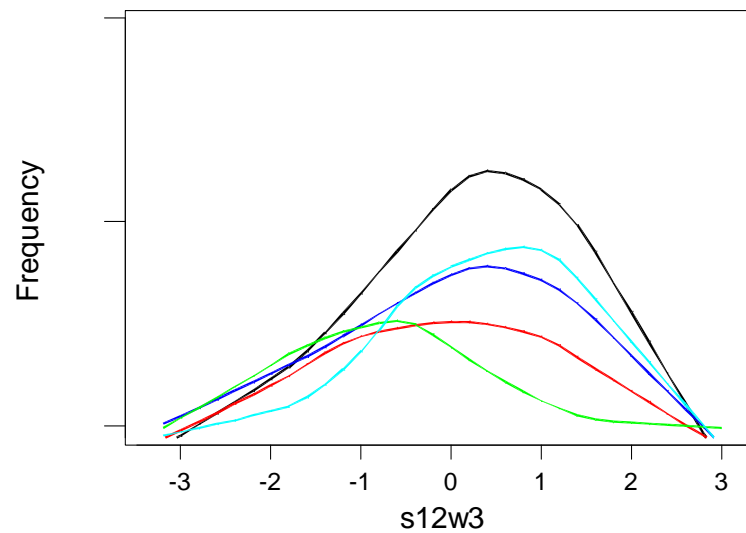
(1)=218 (2)=96 (3)=139 (4)=75 (5)=150 genes

Clusters from Hcomp5 (1st PCA plane)
 black=1 red=2 blue=3 green=4 cyan=5

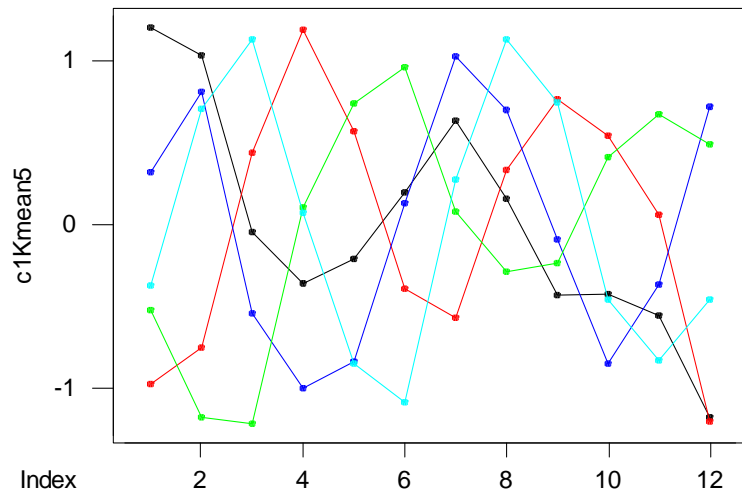


(gray: original coord's projected on the plane, joined in time order and magnified)

Smoothed freq. histograms for Hcomp5 clusters, s13w3
 black=1 red=2 blue=3 green=4 cyan=5

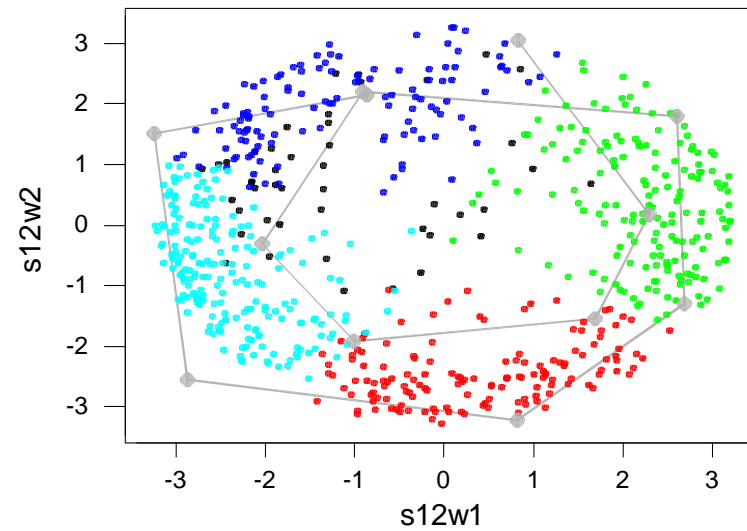


Cluster centroids, Kmeans5
 black=1 red=2 blue=3 green=4 cyan=5



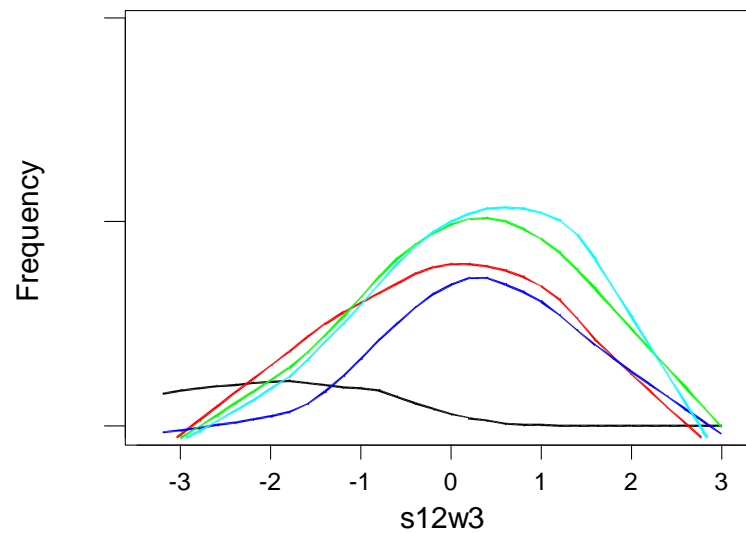
(1)=45 (2)=143 (3)=119 (4)=169 (5)=202 genes

Clusters from Kmean5 (1st PCA plane)
 black=1 red=2 blue=3 green=4 cyan=5

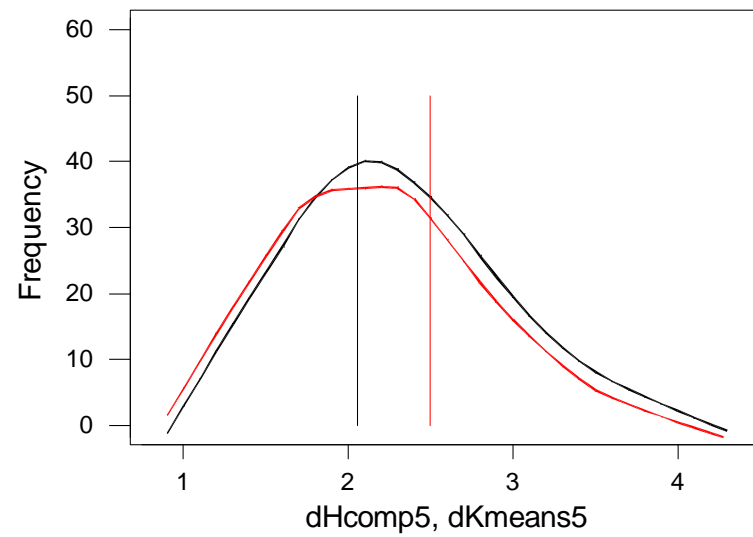


(gray: original coord's projected on the plane, joined in time order and magnified)

Smoothed freq. histograms for Kmean5 clusters, s13w3
 black=1 red=2 blue=3 green=4 cyan=5

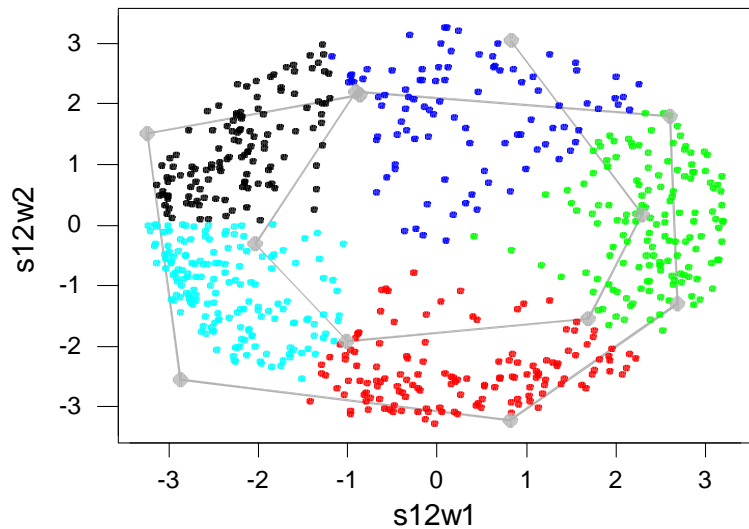


Smoothed freq. histograms, distance from centroid
black: Hcomp5, red: Kmeans5



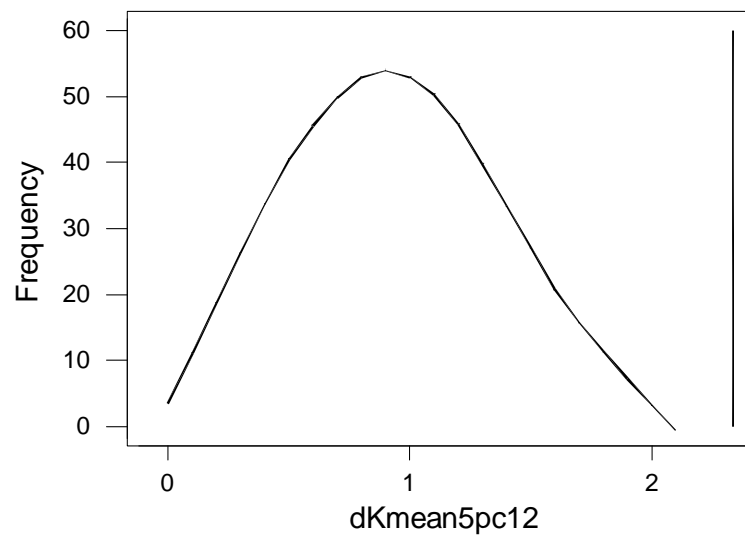
min dist between centroids: Hcomp5=2.0563, Kmeans5=2.4974

Clusters from Kmean5pc12 (1st PCA plane)
black=1 red=2 blue=3 green=4 cyan=5



(gray: original coord's projected on the plane, joined in time order and magnified)

Smoothed freq. histogram, distance from centroids



min distance between centroids 2.3351